

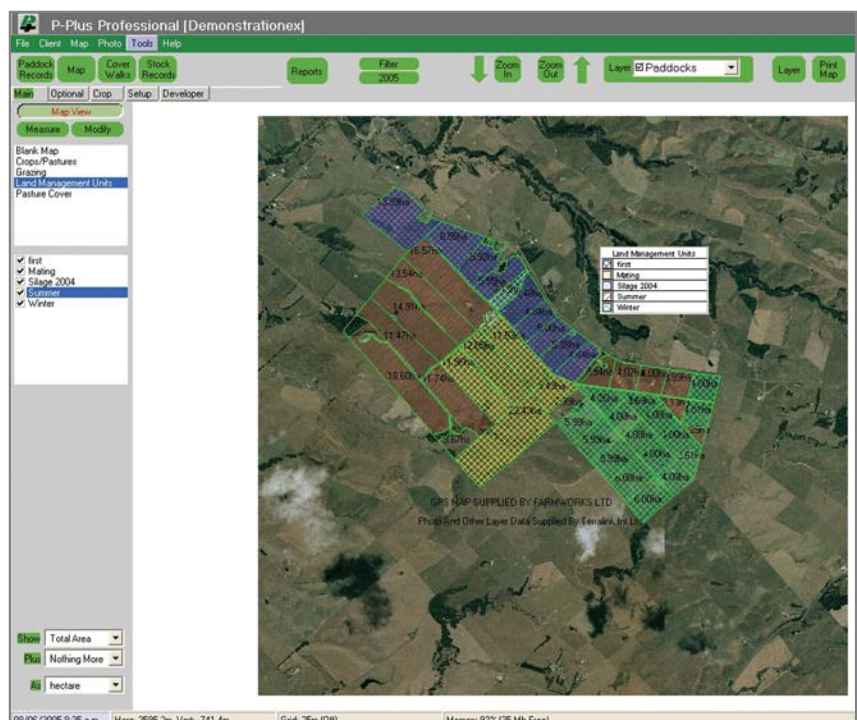


A FULLY FUNCTIONAL FARM PRODUCTION AND MAPPING PROGRAM FOR DETAILED FARM MANAGEMENT INFORMATION. P-PLUS CONSISTS OF 5 KEY MODULES; MAPPING, PADDOCK, STOCK, FEED FORECASTER-BUDGET AND *INDIVIDUAL ANIMAL THAT COMBINE TO FORM A SOPHISTICATED AND EASY TO USE PRODUCTION RECORDING PROGRAM. P-PLUS SUITS A FULL RANGE OF FARMING SYSTEMS AND TYPES.

*NOTE: THE INDIVIDUAL ANIMAL MODULE IS UNDER DEVELOPMENT AND IS DUE FOR RELEASE IN DECEMBER 2005.

P-PLUS MAP – IS A FULLY FEATURED FARM MAPPING TOOL WITH INTEGRATION TO THE DIARY BASED PADDOCK AND GRAZING RECORDING SYSTEMS. THE MAPPING MODULE UTILISES PHOTOS, SEPARATE LAYERS, LINES, COLOURS, SYMBOLS, GPS CO-ORDINATES, SHAPE AND TEXT FOR BUILDING CLEAR MANAGEMENT MAPS FOR MULTIPLE USES AND APPLICATIONS.

- Produce maps from scanned images, JPEG, TIFF or BMP files. Sizes of images loaded will be dependent upon computer power.
- Load aerial photos, create farm maps with fence lines, paddock names or number, drainage, water systems, roads and tracks, etc. Over 20 layers available.
- Create points such as irrigation hydrants, trees, trigs, buildings and key features.
- Information is recorded onto individual layers which can be turned on or off at will, simplifying reporting formats.
- Calculate paddock areas, waste areas, productive areas, cropping areas, grazing areas. Measure fenceline length.
- Draft and generate sub paddocks, temporary fence lines.



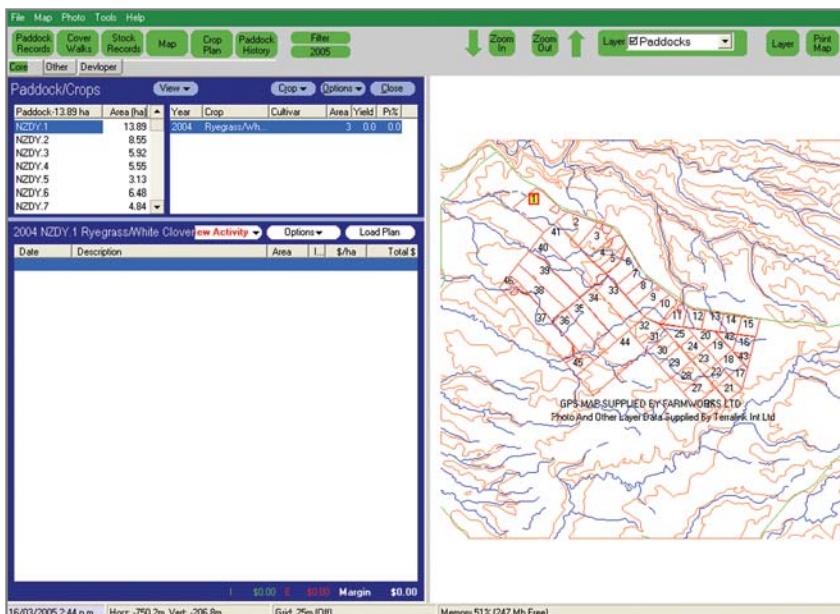
P-PLUS MAP DISPLAYING AERIAL PHOTO LAYER, FENCE LINES AND PADDOCK AREAS

P-PLUS MAP CONTINUED . . .

- Load (import) shape files such as soils, contours and productive areas.
- Load (import) GPS Maps from DXF and shape files.
- Email and or export maps in DXF, Shape, BMP, JPEG and Adobe (PDF) formats.
- Create management units (blocks) for management reporting
- Lines and symbols can be applied in differing sizes, shapes and colours.
- Enclosed areas can be coloured to suit vegetative types, feed quantities, or animal classes grazing.
- Integrates with CoverWalks, Paddock (Crop), Stock and Feed Forecaster & Budget modules.
- A range of reports can print out simple or complex maps by merely highlighting the layers required.
- Geo-referenced photos can be imported in JPEG or TIFF format in conjunction with a GPS map.
- Maps or photos (if geo-referenced) will display GPS co-ordinates and overlay each other accurately.
- DXF and Shape files are in NZ Map grid format.
- Reports can be emailed and edited to suit specific needs.
- Cost out fence lines, tracks or pipelines.
- Download GPS points from Garmin Unit (available as an ADD-ON Feature)

P-PLUS PADDOCK (INCLUDES CROP) – RAPIDLY RECORD ALL PADDOCK AND CROP INPUTS, OPERATIONS AND YIELDS.

- Monitor paddock activities with full diary options.
- Create paddocks and details such as soils, pasture types, fertility, pests and diseases as required.
- Record pasture and crop histories for paddocks and activities associated with these such as cropping, irrigation, feed conservation, fertiliser and pest control activities.
- Detail activity inputs and outputs and associated costs and revenue for individual paddocks, pastures, crops or specialist activity.
- Multiple paddock data entry supported.
- Maintain monitoring activities such as soil tests, pest levels, or specialised activities.
- Calculate gross margins for enterprise activities.
- Maintain an inventory operation.
- All activities are designed to meet quality assurance requirements and provide clear audit trails for traceability requests.

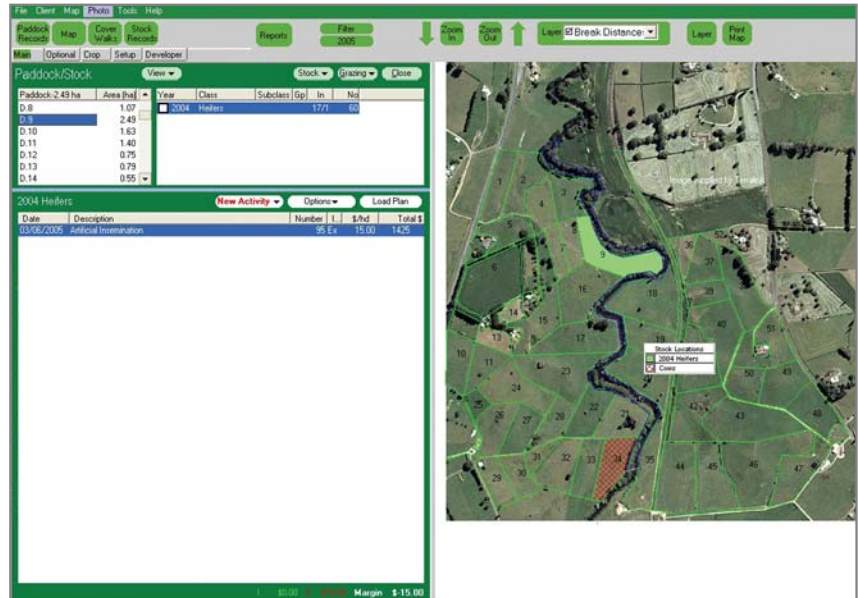


RECORD PADDOCK ACTIVITIES AND SHOW PASTURE TYPE IN P-PLUS PADDOCK

- Reports can be configured in tables, lists, or in conjunction with maps.
- Export or email reports into PDF and JPEG format.
- Reports are available by product, by crop, by paddock, by time.

P-PLUS STOCK – RECORD ALL LIVESTOCK PRODUCTION, HEALTH, REPRODUCTION AND MANAGEMENT RECORDS, INCLUDING LIVESTOCK TRANSACTIONS AND RECONCILIATION, GRAZING, FEEDING RECORDS FOR BOTH PASTURES AND SUPPLEMENTS, AND WOOL PRODUCTION.

- Monitor livestock production, health, reproduction and management practices with full diary options.
- Create stock classes and detail breed, herd/mob information.
- Record livestock histories for classes of stock and activities associated with these, such as feeding, animal health, treatments, stock reproduction – mating, pregnancy testing, lambing, calving, weaning etc.
- Monitor stock production such as milk, meat, wool, velvet, liveweight gain.
- Detail activity inputs and outputs and associated costs and revenue for mobs and herds.
- Maintain monitoring activities such as AB, herd testing, TB testing, scanning.
- Maintain an inventory operation.
- All activities are designed to meet quality assurance requirements and provide clear audit trails for traceability requests.



MONITOR LOCATION OF STOCK MOBS IN P-PLUS STOCK

- Reports can be configured in tables, lists, or in conjunction with maps.
- Integrates with P-Plus Map and Paddock and P-Plus Feed Forecaster-Budget modules.

P-PLUS COVERWALKS – MONITOR Paddock PASTURE COVER GROWTH RATE AND FEED WEDGE, BY Paddock AND MANAGEMENT UNIT.

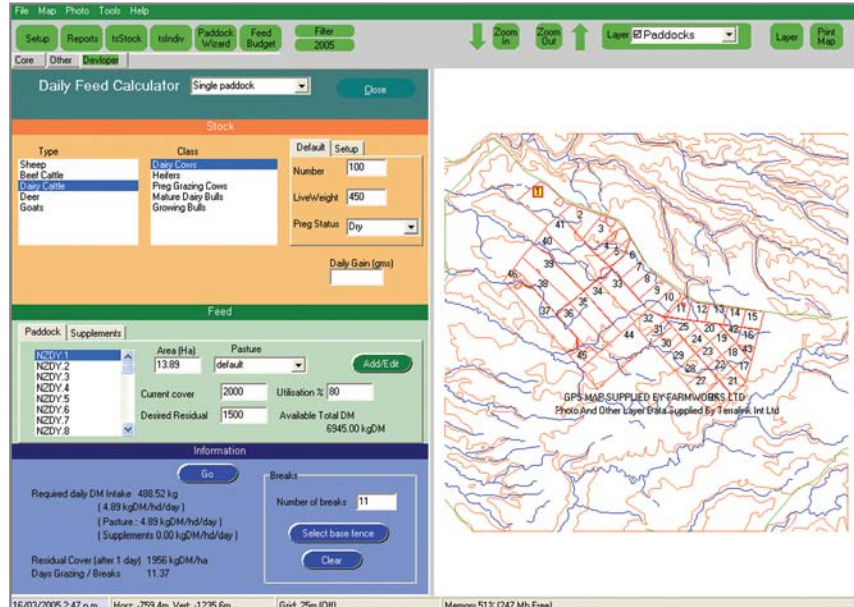
- Records pasture covers from FARMWORKS Electronic Rising Plate Meter or from a manual plate meter.
- Produce reports: Cover on date, cover over time, feed wedge, growth rates.
- Simple, logical data entry.
- Ability to create different management blocks or units for specific reporting.
- Integrates with P-Plus Map and Paddock and P-Plus Feed Forecaster-Budget modules.



MONITOR FEED POSITION WITH P-PLUS COVERWALKS

P-PLUS FEED FORECASTER-BUDGET – CALCULATE ANIMAL FEED DEMAND AND SUPPLY FROM DAILY RATIONING TO ANNUAL FEED BUDGETING. USE IN CONJUNCTION WITH THE MAPPING MODULE TO DETERMINE OPTIMUM GRAZING BREAKS.

- A daily feed calculator or a longer term feed budget for managing feed allocations to herds or mobs. (Dairy, sheep, beef, goats)
- Use the Daily Feed Calculator to determine mob or herd requirements each day.
- Evaluate feed supply and demand requirements daily, weekly, monthly, yearly.
- Calculate feed demand based on the physiological state of the animal, (lactating, growing, maintenance), feed quality and feed availability.
- Provide feeding printouts to staff showing paddocks to be fed, break sizes and supplements to be provided relevant to herd or mob size.
- Determine paddock breaks for effective feed allocation.
- Evaluate feed quality by DM% and MJME/kg.
- Set demand requirements based on production targets (eg. milksolids, growth rates) and determine supply implications.



OPTIMISE THE LOCATION OF FEED BREAKS WITH P-PLUS FEED FORECASTER AND MAP

- Integrate with your GPS map to plan grazing patterns, determine break areas and temporary fence options.
- Determine feed requirements based on feeds of different quality.
- Incorporate supplements, paddock activities (hay, crop, silage, nitrogen application) to maximise production.
- Optimise feed usage and balance intake to suit production targets and supplement availability.

AVAILABLE LICENCE OPTIONS

There are two packages available, **P-Plus Professional** and **P-Plus Farm**.

P-Plus Professional is recommended for users who wish to manage multiple farms in the one system. The licence allows a maximum of 5 farms per licence.

P-Plus Farm is recommended for users who only require one farm in the system.

SALES MODULE CONFIGURATIONS

- Map & Paddock (& Crop if required)
- Stock
- Feed Forecaster-Budget
- CoverWalks
- *Individual Animal (Release December 05)



P-PLUS FARM MANAGEMENT SOFTWARE

RECOMMENDED SYSTEM REQUIREMENTS

- Operating system: Windows 2000® or Windows XP®
- CPU: 2.00GHz
- RAM / Memory: 256MB minimum – recommend 512MB
- CD ROM Drive: DVD/CD –RW combo drive
- Monitor: SVGA
- Windows compatible printer
- Internet access for licensing and support

Note: **P-Plus CoverWalks** will run comfortably on Windows 95 or Windows 98 as a standalone package.

NEED TO KNOW MORE? CONTACT:

FARMWORKS PRECISION FARMING SYSTEMS LTD
 8 MANCHESTER SQUARE, PO BOX 433 FEILDING , NEW ZEALAND
 T 64-6 323-9059 F 64-6 323-1371
 E INFO@FARMWORKSPFS.CO.NZ
 W WWW.FARMWORKSPFS.COM

Disclaimer

Whilst every effort have been made to ensure accuracy, neither FARMWORKS Ltd nor any employee of the company, shall be liable on any ground whatsoever to any party in respect of decisions or actions they may make as a result of using this information. FARMWORKS reserves the right to make changes without notice to any service or product specification to improve reliability, function or design. FARMWORKS, P-Plus and Ag-Hub are registered trademarks of FARMWORKS Ltd. FARMWORKS Precision Farming Systems Limited is a subsidiary of FARMWORKS Limited. © 2005 FARMWORKS Limited. All rights reserved.

